

GT2 single vs multi user

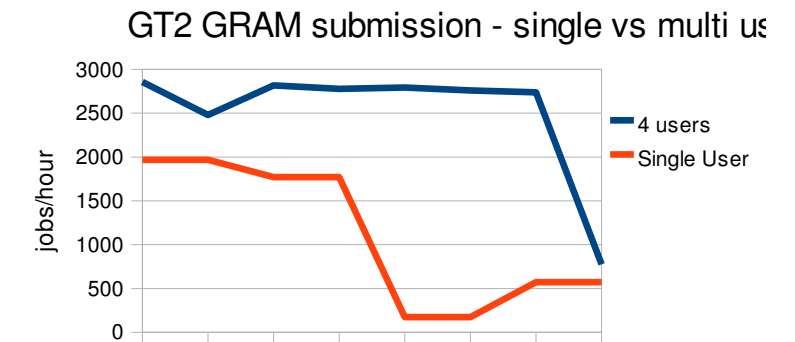
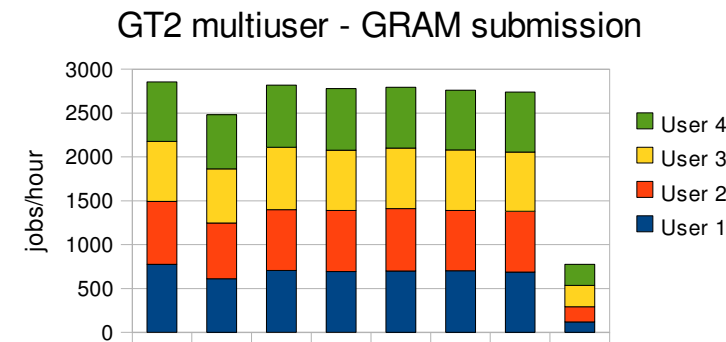
Testing with loadtest_condor v1, 30min jobs

Results at a glance

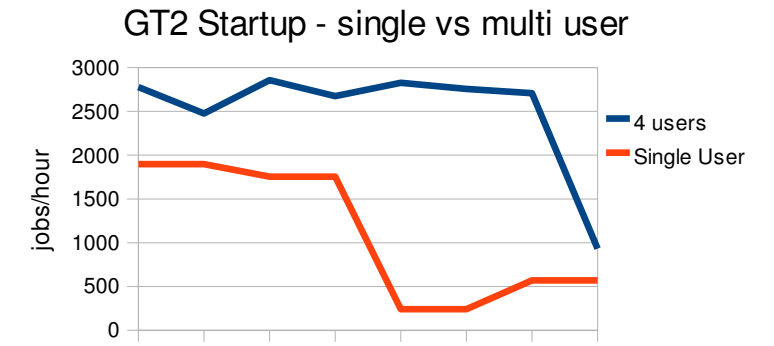
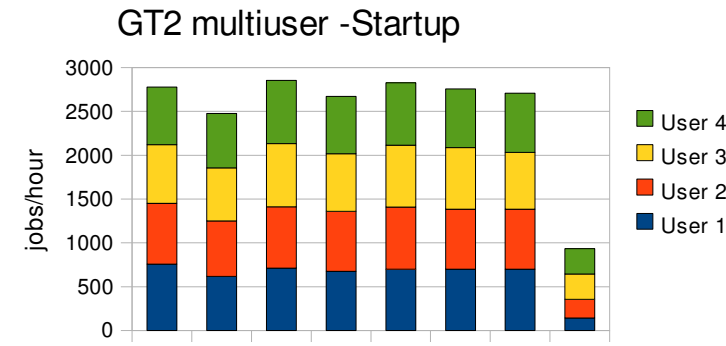
jobs/hour	Condor-G to Globus submission		Condor-G noticing jobs starting		Condor-G noticing jobs terminating		... terminating under high load		Limiting one	
Single user	1968		1896		888		449		449	
Total 4 users	2856	145%	2855	151%	3483	392%	1539	343%	1539	343%
One user when 4 submitting	777	39%	756	40%	876	99%	388	86%	388	86%

jobs/minute	Condor-G to Globus submission		Condor-G noticing jobs starting		Condor-G noticing jobs terminating		... terminating under high load		Limiting one	
Single user	32.8		31.6		14.8		7.48		7.48	
Total 4 users	47.6	145%	47.58	151%	58.05	392%	25.65	343%	25.65	343%
One user when 4 submitting	12.95	39%	12.6	40%	14.6	99%	6.47	86%	6.47	86%

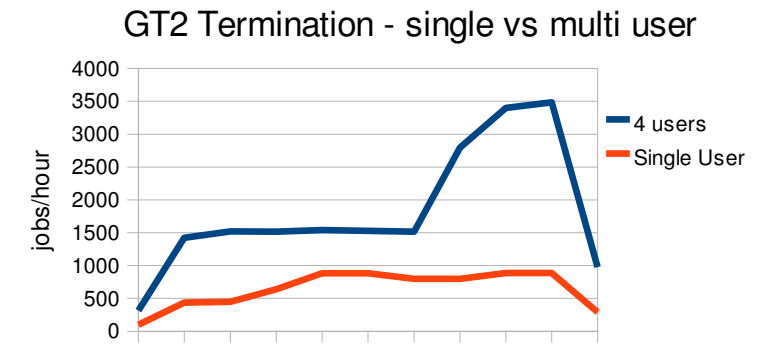
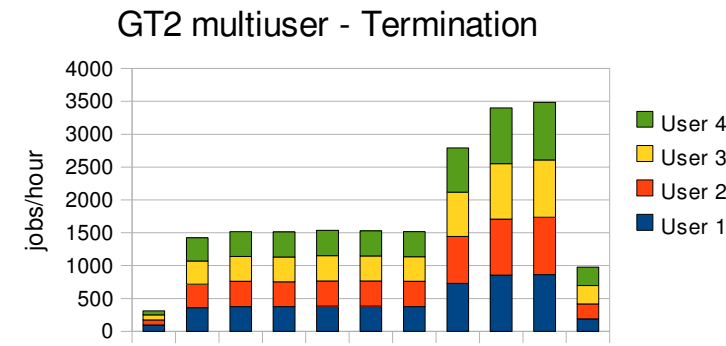
To GRAM	User 1	User 2	User 3	User 4	4 users	Single User
	777	716	684	679	2856	1968
	613	632	618	617	2480	1968
	706	694	711	706	2817	1770
	695	694	689	701	2779	1770
	698	714	688	693	2793	174
	703	685	693	679	2760	174
	688	692	675	685	2740	571
	120	173	242	240	775	571
	0	0	0	0	0	
	0	0	0	0	0	
	0	0	0	0	0	
max	777	716	711	706	2856	1968



Startup	User 1	User 2	User 3	User 4	4 users	Single User
	756	696	668	657	2777	1896
	619	630	607	620	2476	1896
	710	701	721	723	2855	1755
	674	685	658	656	2673	1755
	701	706	708	712	2827	241
	698	685	703	670	2756	241
	701	685	647	674	2707	571
	142	213	289	289	933	571
	0	0	0	0	0	
	0	0	0	0	0	
	0	0	0	0	0	
max	756	706	721	723	2855	1896

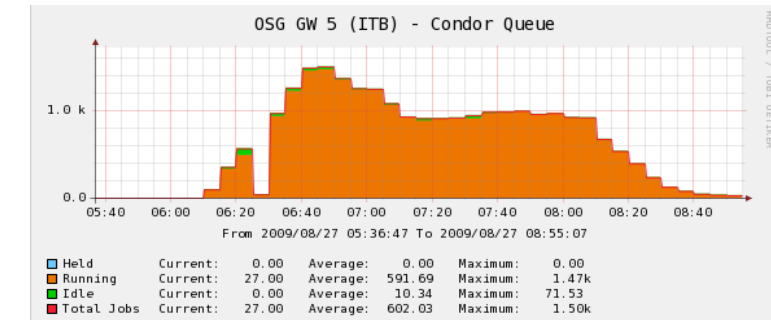
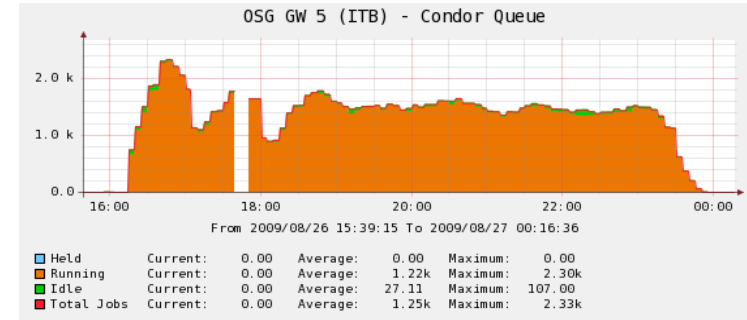


Termination	User 1	User 2	User 3	User 4	4 users	Single User
	97	76	78	61	312	99
	359	357	355	351	1422	437
	375	387	376	381	1519	449
	379	375	379	381	1514	640
	384	381	386	388	1539	883
	385	380	383	382	1530	883
	379	384	374	379	1516	799
	731	712	674	676	2793	799
	857	850	846	845	3398	888
	863	873	871	876	3483	888
	192	226	279	281	978	289
max	863	873	871	876	3483	888
high load	385	387	386	388	1539	449



Sheet1

Job queue on the CE



CE: osg-gw-5.t2.ucsd.edu – OSG 1.0.0 – Opteron 275 CPU

client: Condor 7.3.1, on same LAN as CE

loadtest_condor.sh -type grid gt2 osg-gw-5.t2.ucsd.edu:/jobmanager-condor -req "(condor_submit=(+SleepSlot 'TRUE'))" -end fixed 1800 -jobs 5000 -cluster 100 -in infile 100 -out outfile 123

Performed in August 2009 by Igor Sfiligoi, UCSD