

# GT2 single vs multi user

Testing with loadtest\_condor v1, 30min jobs, maxidle=1k for multi user (limited client memory)  
 Client in Italy (190ms RTT)

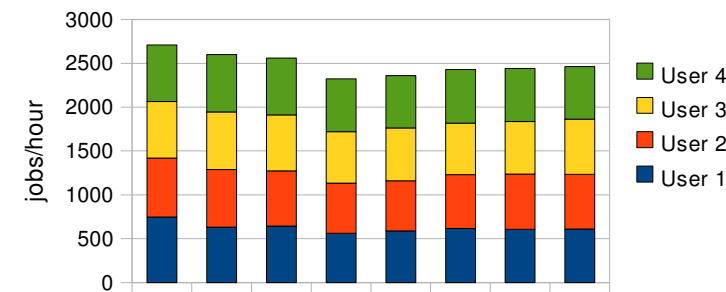
## Results at a glance

jobs/hour	Condor-G to Globus submission		Condor-G noticing jobs starting		Condor-G noticing jobs terminating		... terminating under high load		Limiting one	
Single user	852		852		683		313		313	
Total 4 users	2598	305%	2579	303%	2620	384%	1246	398%	1246	398%
One user when 4 submitting	658	77%	651	76%	659	96%	315	101%	315	101%

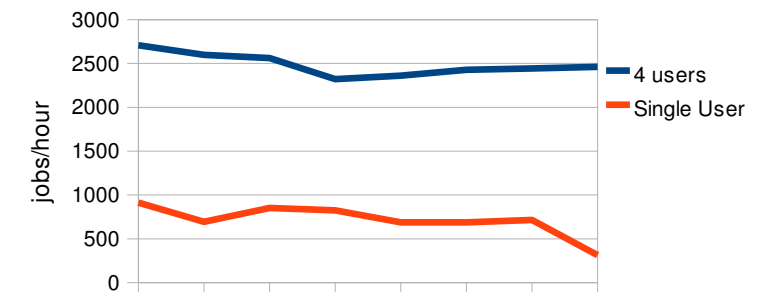
jobs/minute	Condor-G to Globus submission		Condor-G noticing jobs starting		Condor-G noticing jobs terminating		... terminating under high load		Limiting one	
Single user	14.2		14.2		11.38		5.22		5.22	
Total 4 users	43.3	305%	42.98	303%	43.67	384%	20.77	398%	20.77	398%
One user when 4 submitting	10.97	77%	10.85	76%	10.98	96%	5.25	101%	5.25	101%

To GRAM	User 1	User 2	User 3	User 4	4 users	Single User
	747	671	647	644	2709	912
	631	658	656	653	2598	695
	643	630	640	648	2561	852
	560	573	586	603	2322	826
	589	572	600	599	2360	687
	614	617	587	611	2429	687
	607	628	601	606	2442	715
	609	625	630	599	2463	313
	0	26	53	37	116	0
	0	0	0	0	0	0
	0	0	0	0	0	0
	0	0	0	0	0	0
	0	0	0	0	0	0
max	643	658	656	653	2598	852

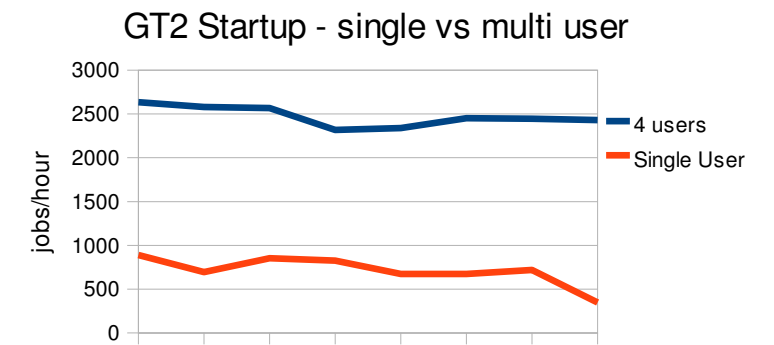
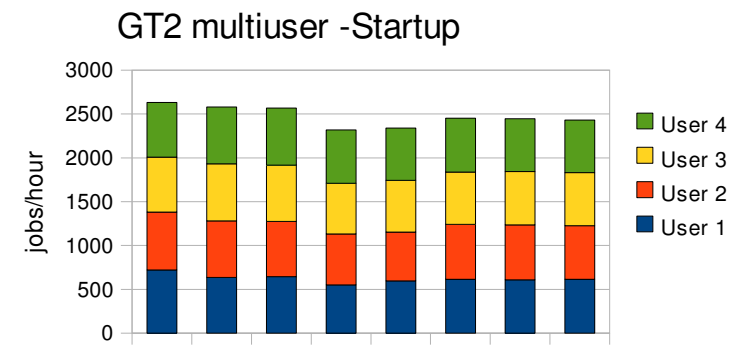
GT2 multiuser - GRAM submission



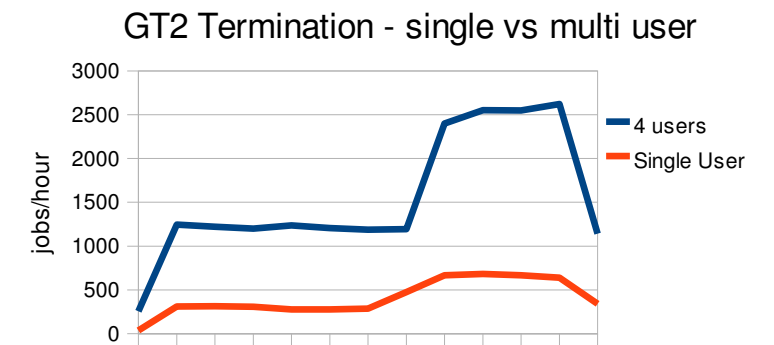
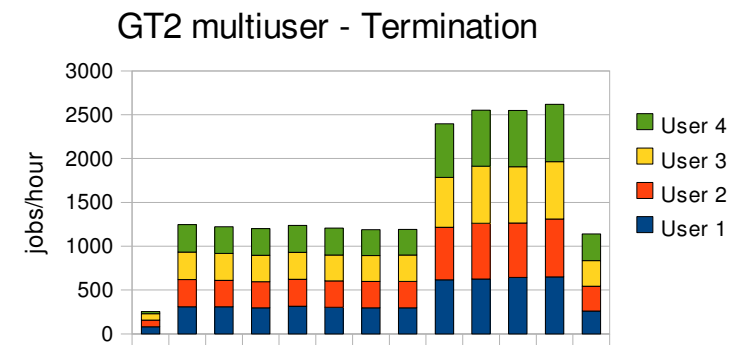
GT2 GRAM submission - single vs multi us



Startup	User 1	User 2	User 3	User 4	4 users	Single User
	721	659	628	625	2633	891
	635	646	651	647	2579	696
	645	630	642	650	2567	852
	551	579	581	606	2317	824
	596	556	592	595	2339	674
	613	628	596	614	2451	674
	607	628	608	602	2445	718
	615	611	605	600	2431	346
	18	64	98	62	242	0
	0	0	0	0	0	0
	0	0	0	0	0	0
	0	0	0	0	0	0
	0	0	0	0	0	0
max	645	646	651	650	2579	852

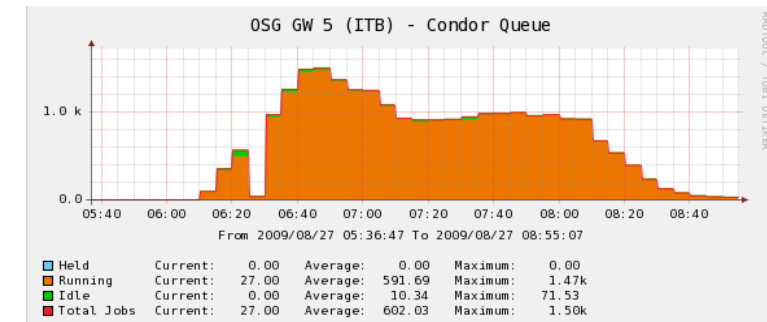
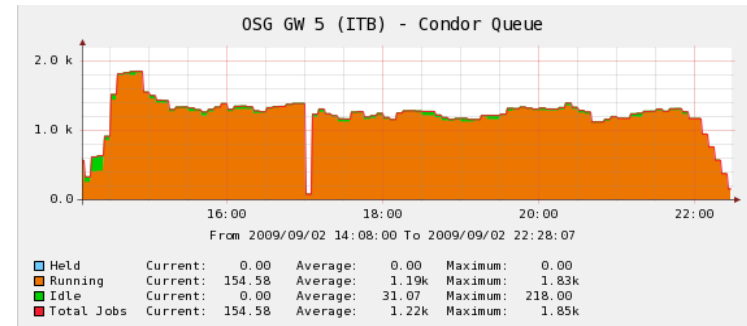


Termination	User 1	User 2	User 3	User 4	4 users	Single User
	80	77	72	26	255	36
	308	312	313	313	1246	309
	308	304	305	305	1222	313
	296	298	303	304	1201	308
	315	308	308	306	1237	277
	302	302	295	307	1206	277
	298	301	294	294	1187	286
	296	301	301	294	1192	474
	617	598	571	611	2397	667
	627	636	650	638	2551	683
	645	619	642	643	2549	668
	650	659	655	656	2620	638
	259	286	292	304	1141	342
max	650	659	655	656	2620	683
high load	315	312	313	313	1246	313



# Sheet1

Job queue on the CE



CE: osg-gw-5.t2.ucsd.edu – OSG 1.0.0 – Opteron 275 CPU

client: Condor 7.3.1, in Italy (190ms RTT), single CPU

loadtest\_condor.sh -type grid gt2 osg-gw-5.t2.ucsd.edu:/jobmanager-condor -req "(condor\_submit=(+SleepSlot 'TRUE'))" -end fixed 1800 -jobs 5000 -cluster 100 -in infile 100 -out outfile 123 [-MaxIdle 1000]

Performed in September 2009 by Igor Sfiligoi, UCSD